

Adobe InDesign CS3

Separations Preview

Quick Tips

Sells Printing Company – Essential Prepress Tips

Inks in InDesign

Using the Separations Preview panel, you can preview color separations, ink coverage limits, and overprinting. Previewing separations on your monitor lets you check the following:

Varnishes and other coatings

Since varnishes are transparent, they can be difficult to preview on-screen. When you preview a varnish separation by itself, the varnished areas appear in black.

Rich black

Rich black consists of black ink mixed with process inks for increased opacity and richer color. This produces a much darker, deeper black on press than can be achieved by using black ink alone. At Sells, we use 60% Cyan, 40% Magenta, 20% Yellow and 100% Black.

Ink coverage

Too much ink on the paper can cause drying problems. At Sells, our maximum ink coverage is 320%. You can then preview the document to identify areas where ink coverage exceeds the press's limit.

Overprinting

You can preview how blending, transparency, and overprinting will appear in color-separated output. While previewing separations on your monitor can help you detect problems without the expense of printing separations.

www.fallcolorfestival.org

Prepare for a full day of heart-pounding, side-aching, gear-grinding, mountain bike excitement for the entire family at the 14th annual Fall Color Festival.

Join us on **Saturday, September 28, 2007** at John Muir Trails (Southern Kettle Moraine Forest) to ride some of the best trails in the area and help raise money for future trail development. This is your day to give something back to the trails and the sport you love. All event proceeds will be donated to the Department of Natural Resources.

To register online, visit www.fallcolorfestival.org

To become a proud sponsor or to volunteer, contact James Wamser via email: jameswamser@mac.com

Color	Coverage
CMYK	220%
Cyan	60%
Magenta	40%
Yellow	20%
Black	100%

Note : In most cases, rich black is undesirable for body type, and is usually the result of an error, such as using RGB instead of CMYK for the type. Using the Separations Preview panel, you can verify this by turning off the black plate.



CERTIFIED EXPERT
Print Specialist®

Questions, contact: **James Wamser** at (262) 317-8272 or email: wamser@sells.com

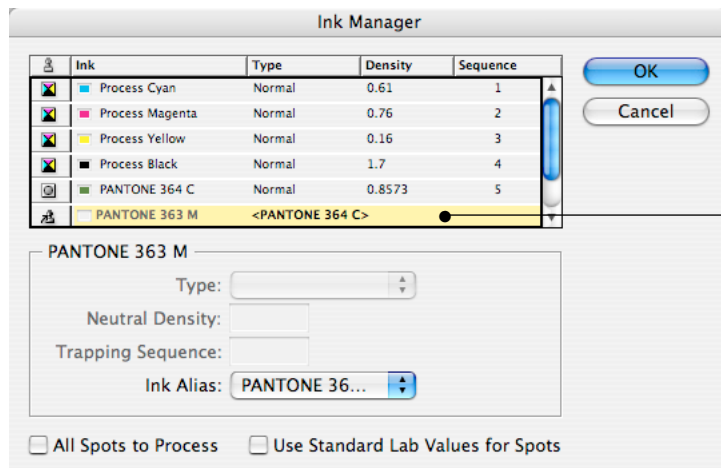


Sells Printing Company – Essential Prepress Tips

Inks in InDesign

The Ink Manager helps you control inks at time of output. Changes you make using the Ink Manager affect the output, not how the colors are defined in the document. Use the Swatches panel to manage inks in the document.

The document below contains two similar spot colors when only one is required. The ink manager can map the two to a single alias, which eliminates an unnecessary plate.



The ink manager can map a spot color to a different spot or process color by creating an alias, which eliminates an unnecessary plate, in this case.

www.fallcolorfestival.org

Prepare for a full day of **heart-pounding** side-aching, **gear-grinding**, mountain bike **excitement** for the entire family at the 13th annual **Fall Color Festival**.

Join us on **Saturday, September 30, 2006** at John Muir Trails (Southern Kettle Moraine State Forest) to ride some of the best trails in the country and help raise money for future trail development. This is your day to give something back to the trails and the sport you love. All event proceeds will be donated to the Department of Natural Resources.

To register online, visit www.fallcolorfestival.org

To become a proud sponsor or to volunteer, contact James Wamser via e-mail: jameswamser@mac.com

